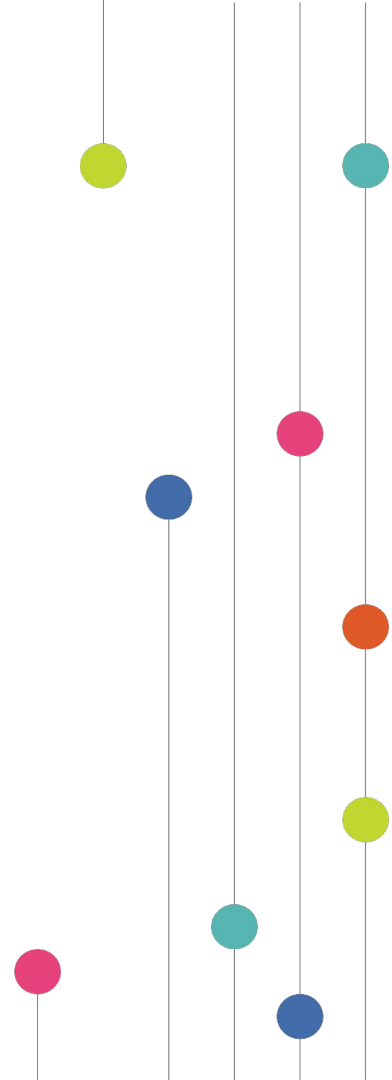


Enrollment in Houston-Region Schools, 2017-2023

*A February 2024 analysis of publicly available
Texas Academic Performance Reports (TAPR)
data for the 2022-2023 school year*



Every Child. Every Neighborhood.



Key Findings

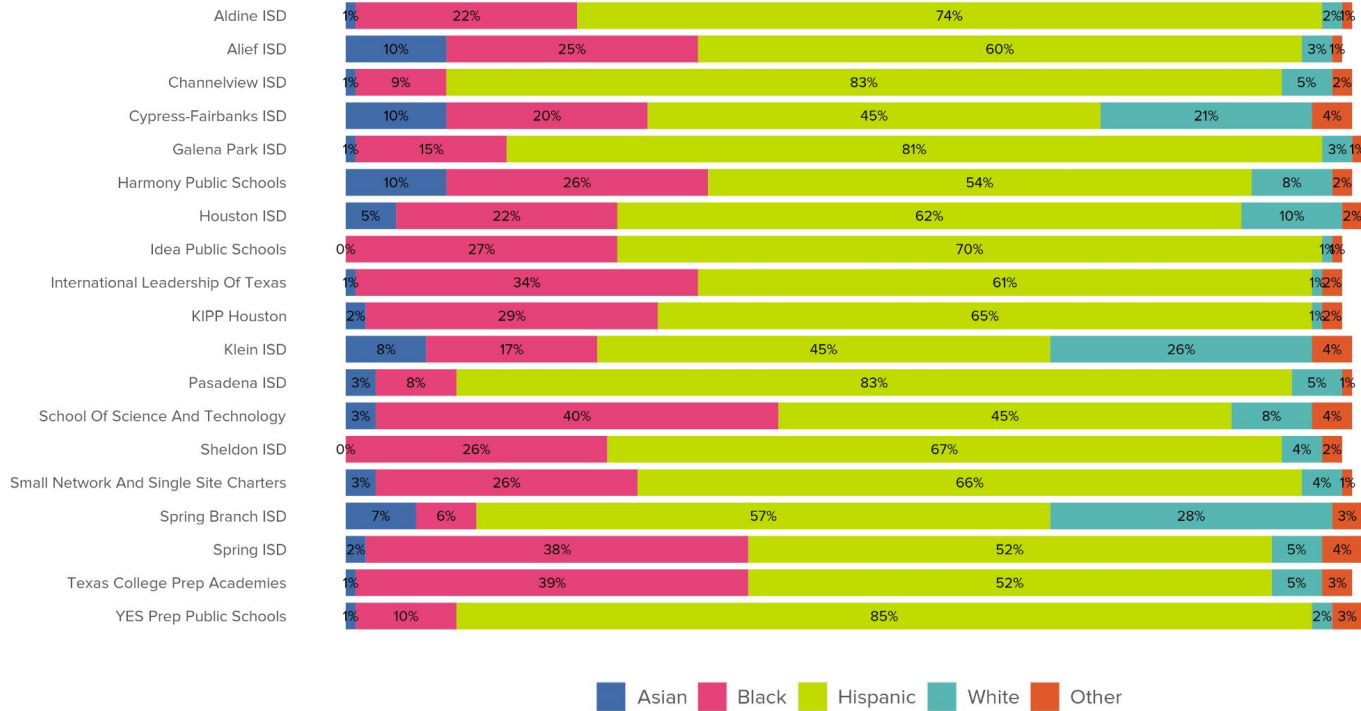
- Eleven **Houston-region ISDs have seen steady enrollment declines since 2017**, with their collective enrollment falling by nearly 48,000 students.
- At the same time, **large charter networks such as Harmony, KIPP, and YES Prep added more than 25,000 students** at their Houston-region campuses.
- The proportion of **emergent bilingual (EB) students in Houston-region ISDs increased steadily since 2017**, with several districts seeing double-digit gains.
 - These students often require additional supports and resources from school systems to overcome the language and other socioeconomic barriers they face to be set up for academic success.

Collectively, Houston-region ISDs had nearly 48,000 fewer students enrolled in 2023 than 2017. Large charter networks added more than 25,000 students at their Houston-region campuses.

District	Total Enrollment, 2017	Total Enrollment, 2018	Total Enrollment, 2019	Total Enrollment, 2020	Total Enrollment, 2021	Total Enrollment, 2022	Total Enrollment, 2023	Enrollment Change, 2017-2023	% Enrollment Change, 2017-2023
Aldine ISD	69,671	67,234	66,763	67,130	63,146	61,528	59,960	-9,711	-14%
Alief ISD	46,331	46,223	45,423	45,281	41,715	40,642	40,301	-6,030	-13%
Channelview ISD	9,522	9,643	9,583	9,721	9,565	9,503	9,513	-9	0%
Cypress-Fairbanks ISD	114,633	116,138	116,245	117,120	114,560	116,913	117,686	+3,053	+3%
Galena Park ISD	22,751	22,565	22,264	22,366	21,896	21,400	21,366	-1,385	-6%
Harmony Public Schools	3,424	3,434	3,306	3,420	3,659	8,435	9,194	+5,770	+169%
Houston ISD	215,408	213,528	209,040	209,309	196,550	193,727	189,290	-26,118	-12%
Idea Public Schools	0	0	0	0	991	2,176	2,985	+2,985	-
International Leadership Of Texas	342	1,636	2,905	3,043	3,402	3,503	3,636	+3,294	+963%
KIPP Houston	13,346	14,397	14,289	15,111	16,636	17,495	18,282	+4,936	+37%
Klein ISD	51,650	52,896	53,252	53,970	52,733	53,059	53,558	+1,908	4%
Pasadena ISD	56,137	54,520	53,157	52,792	50,547	49,255	48,650	-7,487	-13%
School Of Science And Technology	238	488	731	1,138	2,197	2,691	2,865	+2,627	+1,104%
Sheldon ISD	8,862	9,094	9,389	10,124	10,199	10,565	10,986	+2,124	+24%
Spring Branch ISD	35,016	34,975	34,632	35,136	33,233	33,474	33,577	-1,439	-4%
Spring ISD	36,654	36,079	35,348	35,284	33,537	33,406	34,076	-2,578	-7%
Texas College Prep Academies	748	575	391	583	903	1,011	1,105	+357	+48%
YES Prep Public Schools	10,258	10,895	11,405	12,074	13,455	14,557	16,364	+6,106	+60%
Small Network And Single Site Charters	16,628	17,003	18,530	19,858	19,831	14,317	15,573	-1,055	-6%
ISD Total	666,635	662,895	655,096	658,233	627,681	623,472	618,963	-47,672	-7%
Houston Region Total	716,407	716,607	712,309	718,884	694,166	693,212	695,148	-21,259	-3%

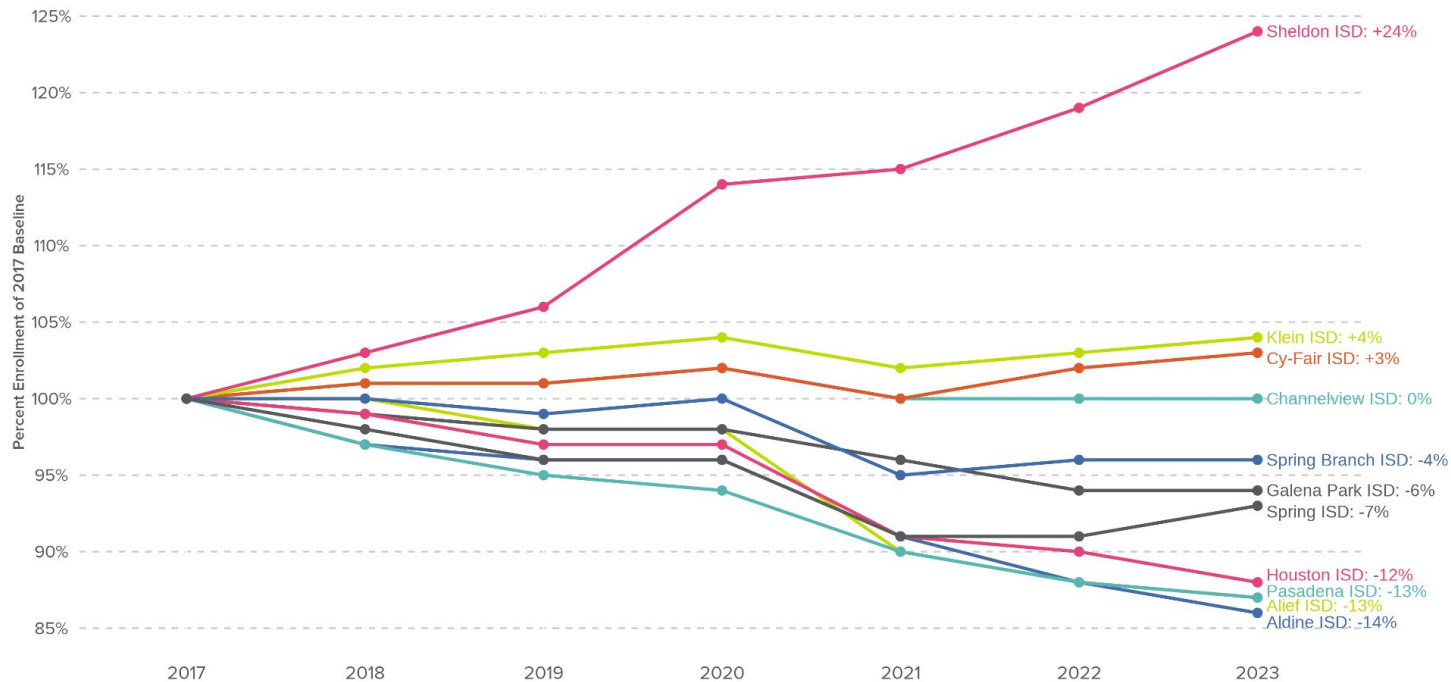
Hispanic students are the largest group in Houston schools, representing over 60% of all students, followed by Black students at 20%.

Enrollment by Race/Ethnicity Group in Houston Region Districts, 2023



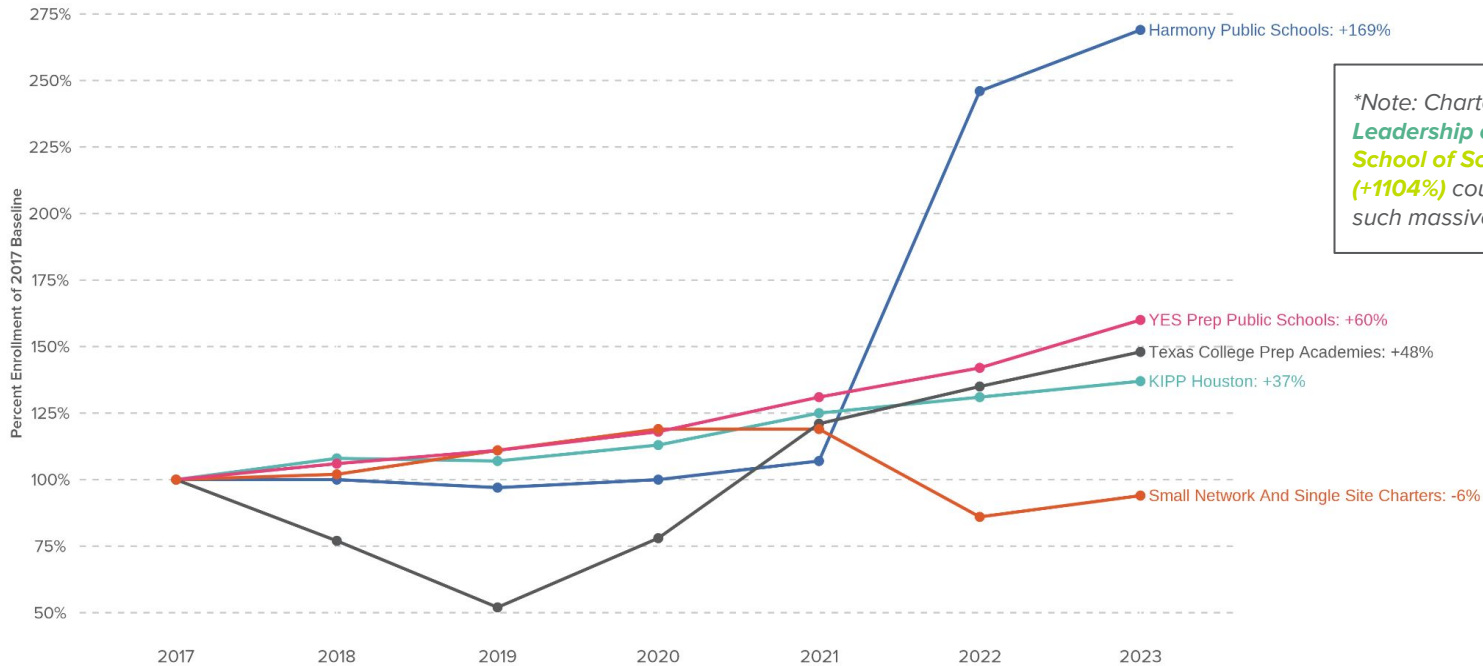
Enrollment at many Houston-region ISDs fell from 2017 to 2023. Only Cy-Fair, Klein, and Sheldon ISDs' enrollment grew over that time period.

Enrollment Change Relative to 2017 Baseline, Houston-Regions ISDs
Collectively, enrollment at Houston-Region ISDs fell by nearly 48,000 students since 2017.



At the same time, large charter networks saw significant growth from 2017 to 2023, adding more than 25,000 students at Houston-region campuses.*

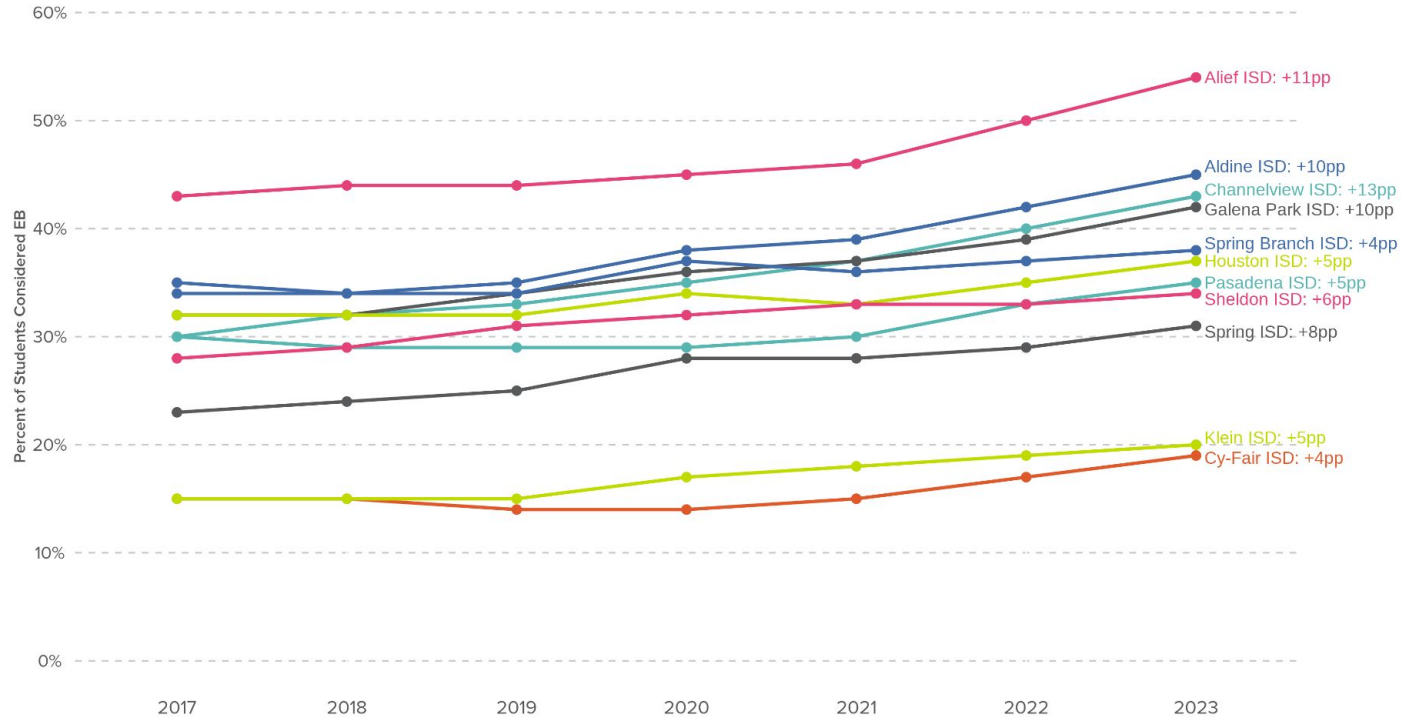
Enrollment Change Relative to 2017 Baseline, Houston-Region Charter Schools
Meanwhile, enrollment at Houston-Region charter schools increased by more than 25,000 students since 2017.



*Note: Charter networks *International Leadership of Texas (+963%)* and *School of Science and Technology (+1104%)* could not be displayed due to such massive growth.

Houston-region ISDs have seen a steady increase in the proportion of emergent bilingual (EB) students since 2017.

Change in Percent of Students Considered Emergent Bilingual, 2017-2023



Implications and Takeaways

- School funding in Texas is based on student attendance, which is also tied to enrollment. As enrollment continues to decline in Houston-region ISDs, this has **significant implications for budgeting and resource distribution**.
- **Large, statewide charter networks showed substantial enrollment growth at their Houston-region campuses from 2017 to 2023**, indicating that families are increasingly exploring their options as they seek the best fit environment for their children.
- At the same time that overall enrollment has fallen in Houston-region ISDs, the **proportion of students considered emergent bilingual (EB) has steadily increased**. Supporting EB students often requires specialized training for educators and additional programming, which may affect decisions around staffing and resource allocation.