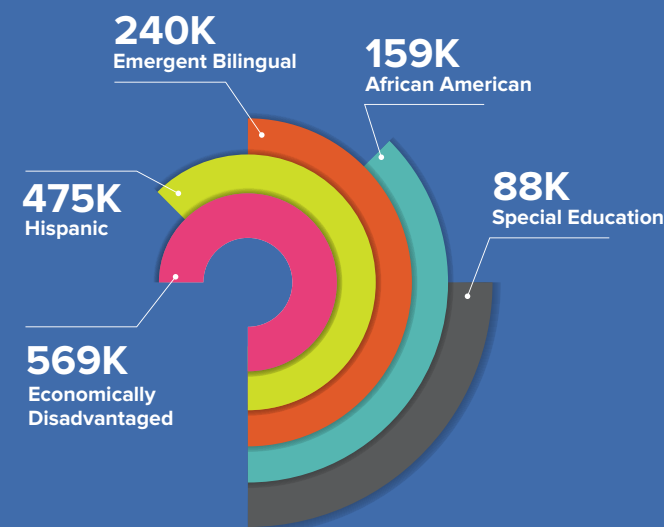
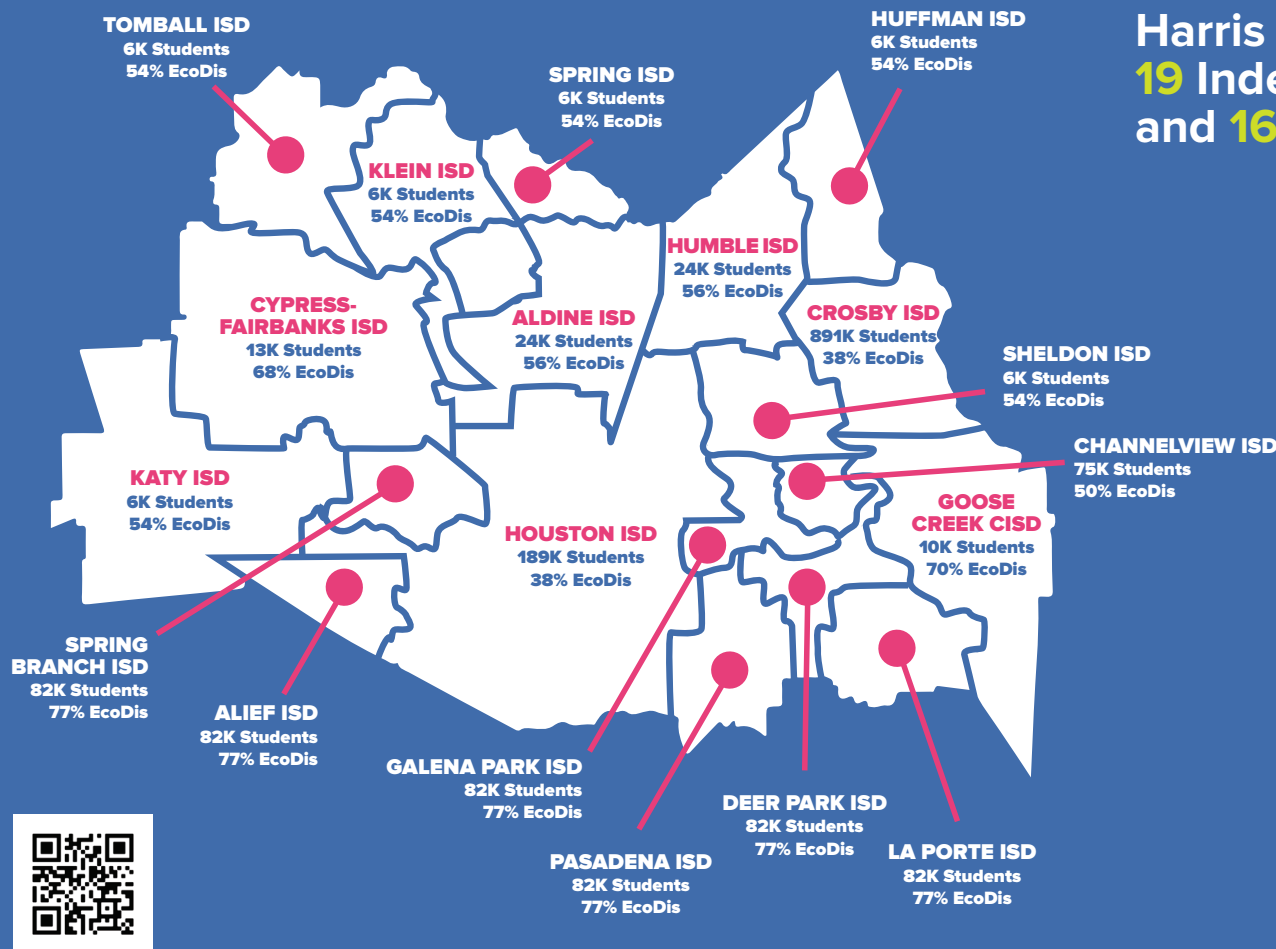


## 2023-2024 Harris County Public Education Snapshot

Harris County<sup>1</sup> includes **19** Independent School Districts and **16** Charter Networks.

This region covers over **1,100** schools that serve over **883,000** students.<sup>1,2</sup>



SCAN FOR MORE DATA

### Data Sources & Notes

- Harris County includes Independent School Districts (ISDs) that are coded by TEA as falling within County code 101. This may include districts that cover multiple counties. This snapshot also includes open-enrollment charters within those ISD boundaries.
- PEIMS Enrollment Report 2022-2023.
- Texas Academic Performance Reports 2022.
- TPEIR Pre-K Enrollment 2017-2022. Analysis includes 3- and 4-year-olds enrolled in Harris County ISDs over the total number eligible based on first grade estimates.

- STAAR Aggregate Data 2016-2023. The STAAR test was not administered in the 19-20 school year due to the COVID-19 pandemic. Testing in the 20-21 school year was administered fully online and was optional; across our region we saw historically low participation rates. In the 22-23 school year all schools administered an updated version of the STAAR test.
- 2022 Texas Academic Performance Reports. CCMR indicators lag by one school year, so the CCMR indicators are for the 2021 graduating class, while enrollment numbers are for the 21-22 school year.
- THECB Texas Higher Education Data. Postsecondary attainment rates are reported by cohort, with the most recent data being reported for 2011-2013 graduates. For future years, we will seek an alternative source for attainment data.

# 2023-2024 Harris County Public Education Snapshot

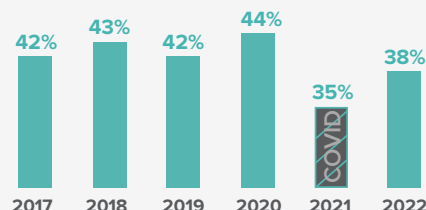
To prepare Houston children for a vibrant, choice-filled life, we must ensure that more kids enter quality pre-K programs and attend A or B rated schools. As a result, more students should meet rigorous academic standards, be prepared for college or career, and attain a postsecondary credential.

## What is it?

### Pre-K Enrollment

**Percentage of students eligible for free public pre-K who are enrolled<sup>4</sup>**

*Students are more likely to succeed in K-12 and beyond when they build foundational skills early on.*



### School Quality

**Number of students attending A or B rated schools by the Texas Education Agency (TEA) Accountability Rating System<sup>2,3</sup>**

*High quality schools should better set students on the path for success*

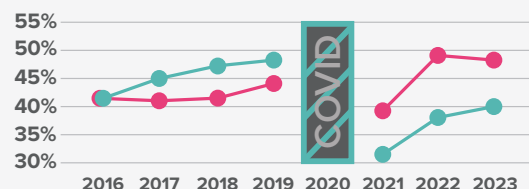
*2023 results are pending TEA release, projected in November.*

*For information on 2022 ratings, explore our [Quality Seats Dashboard](https://goodreasonhouston.org/data) at [goodreasonhouston.org/data](https://goodreasonhouston.org/data)*

### Academic Achievement

**Percentage of students who meet or exceed grade-level expectations on STAAR math & reading<sup>5</sup>**

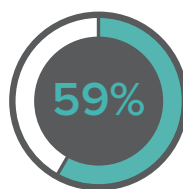
*Academic achievement measures enable us to assess students' preparation for more challenging concepts.*



### College & Career Readiness

**Percentage of students who meet 1+ criteria for career, college, or military readiness (CCMR)<sup>6</sup>**

*Students who meet academic and skills-based milestones aligned to college and industry should be prepared for pursuits beyond graduation.*



CCMR Grads

Example CCMR Criteria

- 28% Met Criterion on SAT/ACT
- 23% Passed AP/IB Test
- 16% Obtained Industry-Based Certification
- 3% Earned Associate's Degree during HS

### Postsecondary Completion

**Percentage of students who attained a degree or credential within 6 years of graduation<sup>7</sup>**

*A growing majority of early-career jobs in Houston require a postsecondary degree or credential.*



Class of 2011-2013 graduates obtained a postsecondary degree or credential

## What does it mean?

**Pre-K enrollment experienced a major dip during the COVID-19 pandemic.** Today, Houston schools only enroll roughly 4 out of 10 eligible 3- and 4-year-olds in public pre-K programs. That leaves 58,000 eligible and unenrolled students each year.

**TEA plans to make changes to the rating system that improve accuracy, rigor, and transparency in 2023.** State law requires the Commissioner to periodically review and make improvements to the methodology. Ratings will be released on a delayed timeline.

**While reading has rebounded, math achievement has not yet recovered from a sizeable dip due to the COVID-19 pandemic.** Student achievement gaps are sustained for low-income, emergent bilingual, Black, and special education students.

**CCMR rates vary significantly by income, language, and race.** The gap between CCMR rates and postsecondary completion rates suggest that some indicators may not be aligned with the knowledge and skills needed for postsecondary persistence.

**Just over a quarter of graduates earn a postsecondary degree or credential.** This leaves a vast majority of Houston-area graduates unqualified for jobs that earn a living wage. There is also a dearth of data on postsecondary completion. The most recent data is lagged by several years.